

Public Document Pack

North Yorkshire Council Children and Young People's Service - Executive Members & Corporate Director Meetings

Thursday, 11 September 2025 / 8.30 am

A G E N D A

1 **Apologies for Absence**

2 **Declarations of Interest**

Items for Executive Member decision

3 Proposals to consult on school organisation arrangements (Pages
3 - 52)

Items for Corporate Director decision

Any Other Business

4 Date of future formal meetings

Circulation:

Executive Members

Janet Sanderson
Annabel Wilkinson

Officer attendees

Sir Stuart Carlton
Howard Emmett
Lisa Cowley

Presenting Officers

Amanda Fielding
Jon Holden

This page is intentionally left blank

North Yorkshire Council

Children and Young People's Service

Corporate Director Meeting with Executive Member

9 September 2025

Proposals for revised school organisation arrangements requested by federated governing boards of primary schools in North Yorkshire

1.0 PURPOSE OF REPORT

1.1 This report provides information about the current school organisation arrangements that are being operated by several primary school federations within the county, and the action that is proposed by the following federated governing boards to ensure compliance with the provisions of the Education Act 1996 and the School Attendance (Pupil Registration) (England) Regulations 2024 which govern the arrangements for school admissions and registration ('the regulations'). In the following three cases the proposals made by the federated governing boards will require that consultation is undertaken:

- BAWB (Bainbridge, Askrigg and West Burton) Federation
- Reeth and Gunnerside Schools Federation
- The Federation of Middleham (VA) & Spennithorne (VC) CE Primary Schools

1.2 The report also provides information about a proposal made by the Federated Governing Board of the Synergy Schools Federation to amalgamate Aiskew, Leeming Bar Church of England Primary School and Leeming and Londonderry Community Primary School with effect from April 2026. This proposal will also require that a consultation is undertaken.

1.3 The report seeks the Executive Member's approval for four consultation exercises to be undertaken relating to the proposals made by the above federated governing boards.

2.0 SUMMARY

2.1 This report provides information about the alternative school organisation models that have been considered by each governing board, and the proposals that have been made for the future school organisation arrangements within each of the federations.

3.0 BACKGROUND

3.1 The DfE's guidance, 'Federations: guidance on the governance processes' defined a federation as 'two or more maintained schools operating under the governance of a single governing body' but identified that each school within a federation is treated as an individual school, including for admissions purposes.

3.2 Through the provision of a formal framework for collaborative working for schools, federations have been identified as providing the potential for a range of benefits including shared governance and leadership, enhanced educational opportunities and resource efficiency.

3.3 The following four federations within North Yorkshire further developed their models to include at least some cross-federation class structures. These involve pupils in one or more-year groups from within each of the federated schools being educated at schools that the individual pupils are not registered. In each case the federated governing board provided transport for some pupils to move between the schools involved in the federation. These federations are:

- BAWB (Bainbridge, Askrigg and West Burton) Federation
- Reeth and Gunnerside Schools Federation
- The Federation of Follifoot and Spofforth CE Primary Schools
- The Federation of Middleham (VA) & Spennithorne (VC) CE Primary Schools

3.4 The federated governing boards established these arrangements in response to falling roll numbers, and the arrangements have been successful in enabling the federated schools to achieve efficiencies whilst continuing to offer a broad and balanced curriculum to all pupils.

3.5 During summer 2024, the council received legal advice that the models that had been established by the federations noted above were not compliant with the provisions of the Education Act 1996 and the School Attendance (Pupil Registration) (England) Regulations 2024 which govern the arrangements for school admissions and registration. The advice, which was partly informed by information provided by the Department for Education (DfE), noted that pupils are required to receive their education at the school at which they are registered.

3.6 This advice was provided to each of the federated governing boards with a request that they consider the school organisation options available to them and make proposals for their future organisation which would take account of local circumstances including transport, school funding arrangements and which would enable compliance with the regulations to be achieved.

3.7 Each federated governing board were requested to consider the four school organisation models that are described in Section 4 below and were provided with indicative school funding models that set out the potential impact upon the federation's budget arising from each of the options. They were asked to develop a proposal which represented a sustainable solution for the federation whilst enabling them to achieve compliance with the admissions and registration regulations.

3.8 In addition to the above, the Council has also received a proposal from the Governing Board of the Synergy Federation for the amalgamation of Aiskew, Leeming Bar Church of England Primary School and Leeming and Londonderry Community Primary School with effect from April 2026. This proposal has been made in response to low pupil numbers on the roll of each school, and to provide a basis for the continued improvement of the educational provision for pupils. The schools are already compliant with admissions and registration requirements.

4.0 SCHOOL ORGANISATION OPTIONS CONSIDERED TO ACHIEVE COMPLIANCE WITH THE ADMISSIONS AND REGISTRATION REGULATIONS

4.1 The Council advised the federated governing boards of the following potential solutions to enable compliance to be achieved:

- Continue as separate primary schools with pupils receiving their education at the school at which they are registered
- Establishing one primary school at one of the existing school sites, closing one school
- Establishing one primary school to operate from the existing sites through amalgamation; or
- Restructuring the primary schools to establish separate infant and junior schools to operate from the existing sites.

4.2 Each of the four governing boards reviewed each of the options prior to reaching a conclusion about their preferred option, taking account of the specific circumstances that applied to the schools in their federation.

4.3 The table below provides a summary of the issues considered: -

Description	
1. Continue as two separate primary schools.	This option would require teaching all seven primary groups in each primary school, with all pupils receiving their education at the school at which they are registered.
2. Become one primary school on one of the sites.	This option, which would involve school closure, and all pupils being educated at the remaining school (subject to parental choice). The continuing school would receive funding as a single school in accordance with the usual school funding arrangements.
3. Become one school across several sites.	This option would involve the amalgamation of the federated schools into a single primary school that could operate at more than one site. It would require the technical closure of the other school. The continuing school would receive funding as a single school in accordance with the usual arrangements, and the funding would include an element of split site funding.
4. Restructure as separate infant and junior schools.	This fourth option involves the retention of separate schools but with revised age ranges and a transition at age 7, between two schools (subject to parental preferencing). The schools would receive funding in accordance with the usual arrangements but with smaller age ranges available for admissions.

4.4 Having undertaken a detailed appraisal of the options for the future organisational arrangements of their schools, as detailed above, and having reviewed a range of implications arising from each option, including financial implications, the Governing Boards of three of the federations have requested that the Council undertake consultations on their proposals to restructure into separate infant and junior schools.

5.0 EACH FEDERATIONS' CONSIDERATION OF THE OPTIONS AND THE PROPOSALS MADE BY THE FEDERATED GOVERNING BOARDS

5.1 The federated governing boards considered each of the options identified above and submitted the linked proposals set out below for consideration:

5.2 BAWB (Bainbridge, Askrigg and West Burton) Federation

The Federated Governing Board of BAWB suspended teaching at West Burton Church of England (Voluntary Controlled) Primary School with effect from September 2024, due to the low number of pupils on roll at the school for the academic year 2024-2025. Pupils registered at the school continued to be educated at the other schools within the federation.

The table below provides a summary of the Federated Governing Board's conclusions:

Description	Why was the option <u>Discounted</u> or <u>Recommended</u> ?	Result
1. Continue as three separate primary schools.	The Governing Board did not consider there to be sufficient pupils on roll at the schools for this to be a viable option.	Discounted
2. Become one primary school on one of the sites.	The Governing Board concluded that there would be insufficient space on one school site for the full age range, including nursery provision.	Discounted
3. Become one school across two or three sites.	Utilising the indicative financial model provided by the council, the Governing Board identified that this option would result in a significant reduction in the revenue received compared to that currently received by the federation and considered that that would have a detrimental impact upon the schools if it were to be pursued.	Discounted
4. Restructure as separate infant and junior schools and close one school	<p>The Governing Board considered that this option would improve education of children in their peer groups by enabling classes with a narrower age range than Option 1 above, and that it provided a more financially viable solution than Option 3 above.</p> <p>The Governing Board concluded that it should propose that West Burton CofE (VC) should be closed, and that the proposed infant and junior schools should be established at the other two sites.</p> <p>The Governing Board noted that either school may not be the nearest suitable school (for transport eligibility purposes) for all children living in the proposed joint catchment area.</p>	The federated governing board requested that the Council consider a number of linked proposals arising from their conclusion and, if approved, to undertake the required statutory processes to enable them to be implemented.

The the following linked proposals have been requested for consideration by the Council:

- That West Burton Church of England (VC) Primary School should be closed (this is detailed further below, in section 6 of this report)
- That the age range of Bainbridge Church of England (Voluntary Controlled) Primary School should be changed from 3-11 to 3-7 such that it should become Bainbridge Church of England (Voluntary Controlled) Infant and Nursery School
- That the age range of Askrigg Voluntary Controlled Primary School should be changed from 4-11 to 7-11, such that it should become Askrigg Voluntary Controlled Junior School;
- That the two remaining schools should have a shared catchment area that comprises an amalgamation of the current catchment areas of the three schools.
- To establish a Published Admissions Number (PAN) of 15 at each of the two schools
- That the proposal be implemented from 1 September 2026

5.3 Federation of Follifoot and Spofforth Schools

The table below provides a summary of the federated governing board's conclusions arising from their consideration of the options:

Description	Why was the option <u>Discounted</u> or <u>Recommended</u> ?	Outcome
1. Continue as two separate primary schools.	The Federated Governing Board considered that this was the most suitable option, but noted the requirement for works to be completed at Follifoot CofE (VC) Primary School to enable Reception aged pupils to receive their education the school.	Recommended
2. Become one primary school on one of the sites.	The Federated Governing Board concluded that there would be insufficient space on one school site for the full age range.	Discounted
3. Become one school across two sites.	Utilising the indicative financial model provided by the council, the Federated Governing Board identified that this option would result in a significant reduction in the revenue received compared to that currently received by the Federation and considered that that would have a detrimental impact upon the schools if it were to be pursued.	Discounted
4. Restructure as separate infant and junior schools.	The Federated Governing Board did not consider this to be a suitable proposal.	Discounted

Currently children in reception class are registered at Follifoot but are educated alongside their peers in Spofforth. The Federated Governing Board have advised the council that it is their intention to undertake works at Follifoot CofE (VC) Primary School to achieve compliance with the regulations by providing their Follifoot registered reception pupils with their education at the Follifoot school site in the summer term of 2026, this will support their transition into Year 1. All new pupils after this date will be educated at the site at which they are registered.

This change will not require that a statutory process is undertaken and does not require the council to take any further action.

5.4 Reeth and Gunnerside Schools Federation

Description	Why was the option <u>Discounted</u> or <u>Recommended</u> ?	Result
1. Continue as two separate primary schools.	The Governing Board did not consider there to be sufficient pupils on roll at either school for this to be a viable option.	Discounted
2. Become one primary school	The Governing Board concluded that there would be insufficient space on one school site	Discounted

on one of the sites.	for the full age range, including nursery provision.	
3. Become one school across two sites.	Utilising the indicative financial model provided by the council, the Governing Board identified that this option would result in a significant reduction in the revenue received compared to that currently received by the federation and considered that that would have a detrimental impact upon the schools if it were to be pursued.	Discounted
4. Restructure as separate infant and junior schools.	<p>Utilising the indicative financial model provided by the council, the Federated Governing Board identified this option as providing the most sustainable solution. It concluded that the option would enable the current efficiencies associated with the federation to be maintained, without the significant financial impact associated with Option 3 above.</p> <p>The Federated Governing Board noted a risk arising from the Home to School Transport Policy such that, if a joint catchment area is served, then for some pupils the infant or junior schools may not be the nearest suitable school to their home address for travel eligibility purposes.</p>	The federated governing board requested that the Council consider a number of linked proposals arising from their conclusion and, if approved, to undertake the required statutory process to enable them to be implemented.

Arising from their consideration of the options the Federated Governing Board have submitted the following linked proposals for consideration by the Council:

- That the age range of Reeth Community Primary School is changed from 4-11 to 4-7, such that the school becomes Reeth Community Infant School
- That the age range Gunnerside Methodist (Voluntary Controlled) Primary School is changed from 4-11 to 7-11, such that the school becomes Gunnerside Methodist (Voluntary Controlled) Junior School
- That the schools would have a shared catchment area, comprising an amalgamation of the existing schools' current catchment areas; and
- The Local Authority approves through its discretion a 'nearest gate in the federation' policy for home school transport, which would be conditional upon the federation continuing to provide support with inter-school transport where that is required.
- To establish a Published Admissions Number (PAN) of 15 at each of the two schools
- That the proposal be implemented from 1 September 2026

5.5 The Federation of Middleham (VA) & Spennithorne (VC) CE Primary Schools

The table below provides a summary of the Federated Governing Board's conclusions arising from their consideration of the options:

Description	Why was the option <u>Discounted</u> or <u>Recommended</u> ?	Result
-------------	--	--------

1. Continue as two separate primary schools.	The Governing Board did not consider there to be sufficient pupils on roll at either school for this to be a viable option.	Discounted
2. Become one primary school on one of the sites.	The Governing Board concluded that there would be insufficient space on one school site for the full age range, including nursery provision.	Discounted
3. Become one school across two sites.	Utilising the indicative financial model provided by the council, the Governing Board identified that this option would result in a significant reduction in the revenue received compared to that currently received by the federation and considered that that would have a detrimental impact upon the schools if it were to be pursued.	Discounted
4. Restructure as separate infant and junior schools.	<p>Utilising the indicative financial model provided by the council, the Federated Governing Board identified this option as providing the most sustainable solution. It concluded that the option would enable the current efficiencies associated with the federation to be maintained, without the significant financial impact associated with Option 3 above.</p> <p>The Federated Governing Board noted a risk arising from the Home to School Transport Policy such that, if a joint catchment area is served, then for some pupils the infant or junior schools may not be the nearest suitable school to their home address for travel eligibility purposes.</p>	The Governing Board requested that the Council undertake consultation of a proposal to establish this option on the basis of the linked proposals below.

Arising from their consideration of the options the Federated Governing Board have submitted the following linked proposals for consideration by the Council:

- That the age range of Spennithorne Church of England (Voluntary Controlled) Primary School be changed from being 4-11 to 4-7 such that the school becomes Spennithorne Church of England Infant School
- That the age range of Middleham Church of England (Voluntary Aided) Primary School be changed 4-11 to 7-11 such that the school become Middleham Church of England (Voluntary Aided) Junior School
- That the schools would have a shared catchment area, comprising an amalgamation of the existing schools' current catchment areas
- That the status of Spennithorne Church of England School is changed from Voluntary Controlled to Voluntary Aided (this is detailed further below, in Section 7).
- To establish a Published Admissions Number (PAN) of 20 at each of the two schools
- That the proposal be implemented from 1 September 2026

- 5.7 School organisation proposals for Church of England schools would also require approval from the Diocesan Board of Education, and for Gunnerside Methodist Primary School from the Methodist Church.
- 6.0 The Proposed Closure of West Burton Church of England (Voluntary Controlled) Primary School**
- 6.1 West Burton Church of England (Voluntary Controlled) Primary School is a rural school. The DfE's guidance (Opening and closing maintained schools. Statutory guidance for proposers and decision makers, October 2024) notes that decision makers are expected to adopt a presumption against the closure of rural schools. However, the guidance confirmed that this does not mean that a rural school will never close but that the case for closure should be strong and clearly in the best interests of educational provision in the area.
- 6.2 The school has a capacity for 51 pupils and there are currently 14 pupils on the school's roll.
- 6.3 In 2013 Askrigg and Bainbridge schools formed a collaboration and in 2014 West Burton joined the collaboration. In 2016, the BAWB Federation was created and "BAWB" refers to the first letter of each school name. Due to the organisation arrangements that were implemented by the Federation, 22 pupils received their education at the school and the remaining pupils were transported to the other schools within the federation, where they received their education alongside peers from other schools. West Burton Church of England Primary School was last inspected by Ofsted in June 2023 which judged the overall effectiveness of the school to be Good.
- 6.4 The BAWB Federation's Governing Board temporarily suspended teaching at the West Burton Church of England (VC) Primary School site with effect from 1 September 2024, and transported pupils registered at the school to either the Bainbridge or Askrigg sites, according to their age. This decision was taken because of the low numbers on the school roll, and because of issues associated with the transport of pupils between the various school sites, this included a loss of learning time within in the school day. The Federated Governing Board considered that the decision was necessary to ensure the continued provision of high-quality education within the federation.
- 6.5 There are currently three neighbouring schools located within 10 miles of West Burton Primary School, including the two federation schools at Askrigg and Bainbridge. Across the three schools there is a combined net capacity of 163 places but there is currently a total of 85 surplus places.
- 6.6 As noted above, the Federated Governing Board's proposal regarding the closure of West Burton Church of England (VC) Primary School forms part of a series of linked proposals which includes a proposal for the school's catchment area to be combined with those of Bainbridge and Askrigg.
- 6.7 The council will engage with the parents of all pupils who are registered on West Burton's roll to discuss the requirement for them to apply for an alternative school place should a closure be agreed, including if it is their intention to transfer to either of the proposed infant or junior schools in the federation.

6.8 The school site is wholly owned by a charitable trust and will revert to the trust if a decision is made for it to close.

7.0 Proposal to change the category of Spennithorne Church of England School from Voluntary Controlled to Voluntary Aided

7.1 The Federated Governing Board of Middleham (VA) & Spennithorne (VC) CE Primary Schools has requested that the category of Spennithorne Church of England School is changed from Voluntary Controlled to Voluntary Aided as part of a series of linked school organisation proposals.

7.2 Joint working with Middleham Church of England Voluntary Aided Primary School could be enhanced should Spennithorne become a Voluntary Aided School due to greater alignment between the two schools. For example:

- the schools would have the same Religious Education syllabus enabling greater shared provision;
- the federated governing board would be the single employer of staff, making shared staffing arrangements easier;
- the inspection processes under the Statutory Inspection of Anglican and Methodist Schools framework would be more aligned.

7.3 As a Voluntary Aided school, the federated governing board would become the Admissions Authority and therefore be responsible for determining the school's admission arrangements, with admissions applications continuing to be processed under North Yorkshire Council's co-ordinated admissions scheme.

7.4 In a Voluntary Aided school, the federated governing board is the employer of all staff, rather than the local authority. Staff in Spennithorne would automatically transfer their employment on their existing terms and conditions from the local authority to the federated governing board under the Transfer of Undertakings (Protection of Employment) Regulations (TUPE).

7.5 The local authority receives school condition allocation to invest in priorities across the schools for which they are responsible, including Voluntary Controlled schools. As a Voluntary Aided school, Spennithorne would not look to the local authority for this funding, instead, the Diocese receives school condition allocation to distribute based on an assessment of priorities across the Voluntary Aided schools in the Diocese. As a Voluntary Aided school, Spennithorne would be responsible for making a 10% statutory contribution to all capital works funded from school condition allocation funding or Devolved Formula Capital.

8.0 How will the federated schools operate?

8.1 In all cases, the federated governing boards have confirmed their intention to continue to operate as federations in order that they can continue to derive the benefits associated with doing so, and which are identified at 3.2 above.

8.2 Under the proposed new structure, children would be taught at the school in which they are registered within the BAWB (Bainbridge, Askrigg and West Burton) Federation, Reeth and Gunnerside Schools Federation, and The Federation of Middleham (VA) & Spennithorne (VC) CE Primary Schools. the following would also apply:

8.3 Transition

Transition between Key Stages would be marked since it would coincide with a transition between schools. It is considered that the federated schools would work together to deliver a smooth transition and help to ensure that the good progress made by children at Key Stage 1 is maintained and built upon at Key Stage 2.

8.4 Admissions

Pupils on roll at the infant school would not automatically transfer to the junior school. It would be necessary to apply for a place at the junior school, for provision through to age 11. Parents of children attending the infant school would need to express a preference and when they are making their decision parents could also express a preference for any alternative school.

Admissions to maintained and voluntary controlled schools would continue to be managed by the local authority in accordance with its admission policy for community and voluntary controlled schools. The governing bodies of voluntary aided schools would continue to control their own admissions.

8.5 Maintained Schools with a Religious Designation

Schools changing their age range would retain their existing status (community, voluntary controlled or voluntary aided) and those which currently have a religious designation would retain this.

8.6 Admissions Catchment Areas

Under the proposals, the infant and junior schools within each federation would serve the catchment areas which are currently separately served by each primary school. For this reason, the catchment areas within each federation would be merged, with each extended to include the other.

8.7 Home to school travel implications

Eligibility for assistance with home to school travel would be determined in accordance with the Council's home to school travel policy, including any decision to provide discretionary eligibility linked to the individual proposals.

Each federation has asked that special considerations or discretion be given to pupils already on roll at the point that consultation is requested in September 2025. It is proposed that the Council provides discretionary travel for children, already assessed as eligible for travel *and* on roll at schools on 1 September 2026, within the BAWB (Bainbridge, Askrigg and West Burton) Federation, Reeth and Gunnerside Schools Federation and The Federation of Middleham (VA) & Spennithorne (VC) CE schools for the duration of their education at the schools within the same federation, subject to there being no change in their circumstances. This will enable the schools to move to compliant arrangements and would be a time limited discretionary provision so that children already on roll could maintain continuity of education within the federations that they are already registered, in the event that the school organisation proposals result in them having to move to a different school within the federation due to the age range changes. An example would be a current Y1 child who attends a primary school but who is required to move to an infant school for Y2 before returning to the junior school (formerly the primary) for Y3 to Y6 – even if the infant school is not the nearest suitable school at the time of the transfer. This

acknowledges the council's commitment to continue eligibility under the 2019 policy for children in schools before September 2024.

The tables below identify the expected number of pupils within each federation by year group, and who have been assessed as having eligibility for assistance with home to school travel from their existing home address to the school at which they are registered (i.e. under either the 2019 Home to School Transport Policy or the 2024 Home to School Travel Policy).

BAWB Federation – Sept 2025

Year Group	Askrigg CE	Bainbridge CE	Total
Reception		1	1
Y1	2	1	3
Y2	1	6	7
Y3	2	2	4
Y4		5	5
Y5	2	1	3
Y6	3	4	7
Total	10	20	30

Reeth and Gunnerside Schools Federation – Sept 2025

Year Group	Reeth Community Primary School	Gunnerside	Total
Reception	6	5	11
Y1	5	4	9
Y2	6		6
Y3	7	5	12
Y4	2	1	3
Y5	6	5	11
Y6	3	5	8
Total	35	25	60

The Federation of Middleham (VA) & Spennithorne (VC) CE Primary Schools – Sept 2025

Year Group	Middleham CE (VA) Primary School	Spennithorne CE VC Primary School	Total
Reception	2		2
Y1	2	1	3
Y2	1	4	5
Y3	2		2
Y4	1	3	4
Y5	2		2
Y6	2		2
Total	12	8	20

Any new applications for assistance with home to school travel to either school received after 1 September 2026 would only be considered under the current home to school travel policy, unless part of a linked proposal that is decided by the Council.

8.8 Sites and Buildings

The Federated Governing Board of Follifoot and Spofforth CE Primary Schools has noted the requirement for works to be completed at Follifoot CofE (VC) Primary School to enable Reception aged pupils to receive their education the school.

If Spennithorne CE changed category from a Voluntary Controlled to a Voluntary Aided school, there would be no change of ownership of the building. The landlord of Spennithorne School House is the Rector, Church Wardens and Trustees of School House Trust and the landlord of land adjoining Spennithorne CE Primary School is Trustees of the Ferrand Family Irrevocable Trust.

There would be no necessity for landlord consent for a change of age range at Askrigg. The landlord, Yorebridge Educational Foundation, recently signed a lease agreement with NYC from 1/04/2024 – 31/03/2049. 'The Authorised Use' of the premises is educational use only, with no specific mention of age-range.

The West Burton Church of England (Voluntary Controlled) Primary site is managed but not owned by the Council. The absence of any information in the NYC deed packet would indicate that the whole site is owned by a trust. A note from 1989 states that the deeds for the school are held by the Church Authority.

8.9 Learning and Progress

In each case the federated governing boards have confirmed that pupils would be in class groups with their peers. The proposals of separate infant and junior schools share the benefit of greater numbers of children being taught together in similar age groups and curriculum groups. The schools would aim to have integrated arrangements for the assessment of learning, including recording of progress and transition across the infant and junior schools. As now, each separate school would have its own Ofsted inspection and its own budget. With the agreement of the governing board and approval of local authority officers, schools within federations can continue to request to amalgamate budgets.

8.10 Pupil Numbers and Proposed Published Admission Numbers (PANs)

The Published Admission Number (PAN) is the number of school places that the admission authority must offer in each relevant age group of a school. The relevant age group is the age group at which pupils are normally admitted to the school e.g. Reception for a primary school or infant school, and Year 3 for a junior school.

8.10.1 BAWB Federation

As of January 2025, there were 44 pupils registered at Bainbridge Church of England Primary School, 14 pupils registered at West Burton Church of England (Voluntary Controlled) Primary and 33 pupils registered at Askrigg Voluntary Controlled Primary School. These numbers do not reflect pupils being educated at the three schools, since teaching is currently grouped by age group, irrespective of the school in which they are registered.

Based on projected pupil numbers in 2025/6, including pupils from new open market housing, the forecast pupil numbers in the proposed re-organised infant and junior schools are set out below:

	2026/27		2027/28	
Year	Bainbridge Infant	Askrigg Junior	Bainbridge Infant	Askrigg Junior
Reception	11		11	
Year 1	10		11	
Year 2	5		10	
Year 3		16		5
Year 4		12		16
Year 5		10		12
Year 6		10		10
Total	26*	48	32*	43
Potential 9 further pupils from 35 houses with existing permissions and 35 Local Plan houses				+9

Based on May 2025 school census and assumes all pupils currently enrolled at West Burton CE transfer to Askrigg or Bainbridge

*Not including nursery pupils

Currently, the PAN of Bainbridge Church of England Primary School is 12, the PAN of West Burton Church of England (Voluntary Controlled) Primary is 12 and the PAN at Askrigg Voluntary Controlled Primary School is 12. Given the pupil forecast of circa 11 Reception pupils across the Federation, it is not proposed to combine these individual PANs to make a combined PAN of 36. Instead, it is proposed to increase the PANs at the retained Askrigg and Bainbridge sites to 15 allowing choice for parents and accommodating all children within the buildings, which have net capacities of 79 and 84 places respectively. The proposed PANs of 15 would accommodate combining three Reception intakes and takes account of future pupil projections.

It is important to ensure sufficient school places in the local area. BAWB schools are currently in the Outer Wensleydale school place planning area and, even with the proposed closure of West Burton CE, there would remain surplus spaces in the locality.

8.10.2 Reeth and Gunnerside Schools Federation

As of January 2025, there were 58 pupils registered at Reeth Community Primary School and 35 pupils registered at Gunnerside Methodist (Voluntary Controlled) Primary School. These numbers do not reflect pupils in the two schools, since they are taught together by age group, irrespective of the school in which they are registered.

Based on projected pupil numbers in 2025/6, including pupils from new open market housing, the forecast pupil numbers in the proposed re-organised infant and junior schools are set out below:

	2026/27		2027/28	
Year	Reeth Infant	Gunnerside Junior	Reeth Infant	Gunnerside Junior
Reception	15		15	
Year 1	18		15	

Year 2	11		18	
Year 3		17		11
Year 4		13		17
Year 5		6		13
Year 6		18		6
Total	44	54	48	47
Potential +9 pupils from 35 houses with existing permissions and 0 Local Plan houses				+9

Based on May 2025 school census

Currently, the PAN of Reeth is 8 and the PAN of Gunnerside is 7. It is proposed to increase the PANs at both schools to 15. This increase is to accommodate combining two Reception intakes and takes account of future pupil projections.

It is important to ensure sufficient school places in the local area. Both schools are in the Outer Wensleydale school place planning area and there are surplus spaces in the locality.

8.10.3 Pupil Numbers and Proposed PANs at the Federation of Spennithorne and Middleham

As of January 2025, there were 42 pupils registered at Spennithorne CE VC Primary School and 50 pupils registered at Middleham CE VA Primary School. These numbers do not reflect pupils in the two schools, since they are grouped together by year group, irrespective of the school in which they are registered.

Based on projected pupil numbers in 2025/6, including pupils from new open market housing, the forecast pupil numbers in the proposed re-organised Infant and Junior schools are set out below:

Year	2026/27		2027/28	
	Spennithorne Infant	Middleham Junior	Spennithorne Infant	Middleham Junior
Reception	16		16	
Year 1	15		16	
Year 2	17		15	
Year 3		15		17
Year 4		9		15
Year 5		17		9
Year 6		13		17
Total	48	54	47	58
Potential 19 further pupils from 76 houses with existing permissions				+19

Based on May 2025 school census

Currently, the PAN of Spennithorne is 13 and the PAN of Middleham is 15. It is proposed to increase the PANs at both schools to 20. This increase is to accommodate combining two Reception intakes and takes account of future pupil projections.

It is important to ensure sufficient school places in the local area. Both schools are in the sparsely populated Outer Wensleydale school place planning area and there are surplus spaces in the locality.

9.0 The Proposal to Amalgamate Aiskew, Leeming Bar Church of England Primary and Leeming and Londonderry Community Primary Schools

9.1.1 Aiskew, Leeming Bar Church of England Primary and Leeming and Londonderry Primary Schools are part of the Synergy Schools Federation, which is a federation of six primary schools within North Yorkshire, for which governance is provided via a single federated governing board and leadership by an Executive Headteacher. The schools, which have adjacent catchment areas serving the Leeming area, south of Bedale, joined the federation in 2024 and 2021 respectively.

9.2 Both schools have low numbers of pupils on roll. Aiskew Leeming Bar has a net capacity of 103 places, with 47 pupils on roll in the May 2025 census, while Leeming and Londonderry has a net capacity of 56 places, with 24 pupils on roll in the May 2025 pupil census. Both operate similar two class structures that involve Reception and Key Stage 1 cohorts being educated in one class, and Key Stage 2 children in other classes.

9.3 Following the incorporation of Aiskew, Leeming Bar Church of England Primary School into the Synergy Federation work has been undertaken to improve the quality of the education provision within both schools and the federated governing board have undertaken consideration of alternative models for the organisation of the schools to allow for further improvement in learning.

10.0 School Organisation Options Considered by the Federated Governing Board

10.1 The board have considered the following options for the future organisation of their two schools: -

- Continue as two separate 4-11 primary schools with pupils receiving their education at the school at which they are registered
- Establishing one primary school at one of the existing school sites, eg close Leeming and Londonderry.
- Establishing one primary school to operate from both existing sites; and

10.2 The Governing Board reviewed each of the options and considered a range of criteria, including the potential impact upon teaching and learning, management and financial implications prior to reaching a conclusion about its preferred option.

10.3 The table below provides a summary of the issues considered:

Description	Why was the option Discounted or Recommended?	Result
1.Continue as two separate primary schools.	<p>This option would involve all year groups, from Reception to Year 6, in both schools.</p> <p>An advantage of this option is that no parents or children are unsettled. However, pupils are taught in whole key stage classes, with multiple year groups in one class and socialisation with similar aged peers is not improved. Curriculum is more limited that in classes with smaller age-ranges.</p> <p>The Governing Board did not consider that there are sufficient pupils on roll at either school for this to be a viable option, and it was agreed that this would have the potential to have a negative impact upon the quality of the schools' educational provision.</p>	Discounted

<p>2. Become one primary school on one of the sites.</p>	<p>This second option would involve the closure of one school.</p> <p>Teaching all pupils in one building with larger peer groups would enable peer group teaching and selection of the site at Aiskew would give pupils better access to outside space. However, the federation board considered that there would not be adequate space on either site for the age range, which would now include nursery aged children.</p> <p>The option would also result in a significant reduction in the revenue received compared to that currently received by the federation which the governing board considered would have a detrimental impact. In particular, it would mean that a proposed new structure of four classes would not be affordable.</p>	<p>Discounted</p>
<p>3. Become one school across two sites.</p>	<p>This option involves amalgamating into a 4 –11 Primary School, with a governor led nursery, across the two existing sites, with the technical closure of one school and the expansion onto an additional site of the other school.</p> <p>The federation board noted a joint catchment area could be served and that this option would gain split site funding which would result in a smaller reduction in revenue received compared to Option 2. This would mean that the new class structure of four classes could be afforded. With only two-year groups in each class, teaching all pupils in larger peer groups would help their socialisation.</p> <p>With the two sites there could be space to extend early years provision and operate a pre-school.</p>	<p>The Governing Board requested that the Council undertake consultation of a proposal to establish this option.</p>

10.4 Having undertaken a detailed appraisal of the options for the future organisational arrangements of the schools, as detailed above, and reviewed a range of implications, the Governing Board has requested that the Council undertake a consultation on their proposal to amalgamate Leeming and Londonderry Community Primary School and Aiskew Leeming Bar Church of England Primary School.

11.0 The Federated Governing Board's Proposal

11.1 The Federated Governing Board have proposed the following: -

- That Aiskew Leeming Bar Church of England (Voluntary Controlled) Primary School and Leeming and Londonderry Community Primary School amalgamate with effect from 13 April 2026
- That this would be achieved through the technical closure of Leeming and Londonderry Community Primary School and the expansion of Aiskew Leeming Bar Church of

England (Voluntary Controlled) Primary School onto an additional site (the Leeming and Londonderry School site)

- That the schools would have a shared catchment area, comprising an amalgamation of the existing schools' current catchment areas
- To establish a Published Admissions Number (PAN) of 15

11.2 Under the proposed new structure, all children would be registered at the primary school but the governor led nursery and Reception children would be taught in the EYFS classes at the Leeming and Londonderry site. Another 3 classes, consisting of Year 1 & 2 children in one class, Years 3 & 4 in another, and Y5 & 6 children in another, would be taught at the Aiskew Leeming Bar site. The single primary school would continue to be funded and supported by the local authority with staff employed by the local authority.

11.3 Pupils would transfer from one site to the other at the start of Year 1 via a managed transition. Teachers would be better able to plan for the change and develop a better understanding of the needs of pupils in different key stages within the context of an amalgamated school.

11.4 Under the amalgamation proposal there would also be the flexibility to change the age of transfer at the beginning of an academic year, should pupil numbers dictate

11.5 Currently each school has a separate Ofsted inspection, but the single school would have a single Ofsted inspection.

11.6 An important part of the proposal is that the single primary school would remain part of Synergy Schools, under a single federated governing board and would continue to be led by an Executive Headteacher. Admissions to the school would be managed by the local authority in accordance with its admission policy for community and voluntary controlled schools.

11.7 A Maintained School with a Religious Designation

The Federated Governing Board have proposed that Aiskew, Leeming Bar Church of England Primary School would be the continuing school. As a result, the amalgamated school would retain the existing denominational status and would be a voluntary controlled school with a Church of England designation.

11.8 The Federated Governing Board have undertaken informal consultation with the Diocese of Leeds during their consideration of the options, and the Diocese will be consulted as part of the proposed consultation exercise.

11.9 School Place Sufficiency

The Council has a statutory duty to ensure that there are sufficient school places available locally to meet the requirements of pupils locally. Utilising projected pupil numbers in 2025/6, including pupils from new open market housing, Aiskew Leeming Bar Church of England Primary School is forecast to have a pupil roll of 47 while Leeming and Londonderry Community Primary School is forecast a pupil roll of approximately 24 pupils. The schools have net capacities of 103 and 56 respectively and 77 and 29 pupils currently living within the two catchments.

Currently, the PAN of Aiskew Leeming Bar is 14 and the PAN of Leeming and Londonderry is 8. It is proposed to that the PAN of the amalgamated school will be 15. This increase will accommodate combining the two Reception intakes and takes account of future pupil projections.

- 11.10 There are 8 other primary schools within the Outer Bedale school place planning area and there will be an overall reduction in places.

DfE No.	Outer Bedale Primary School	Net Capacity	NOR 2025 - May	Position 2026/27	-/+ capacity (May 2025)
3001	Aiskew, Leeming Bar CE	103	47	49	56
3337	Burneston CE VA	133	117	137	16
3020	Crakehall CE	106	113	118	-7
2063	Hunton and Arrathorne CP	70	86	90	-16
2040	Leeming and Londonderry CP	56	24	26	32
2166	Leeming RAF CP	280	156	143	124
2133	Snape CP	52	30	25	22
3124	St Nicholas CE, West Tanfield	70	44	47	26
3119	Thornton Watlass CE	51	21	12	30
		921	638	647	283

- 11.11 The above table shows that across the area there is a general surplus of places.

12.0 CONTRIBUTION TO COUNCIL PRIORITIES

- 12.1 Through continuing with the federations and ensuring school communities are collaborating closely, all of the proposals outlined above, if implemented, will contribute to the 'Place and Environment' vision in the Council Plan. Through supporting pupils to have a good quality of life, they will also contribute to the 'Health, Wellbeing and People' vision in the Council Plan.

13.0 ALTERNATIVE OPTIONS CONSIDERED

- 13.1 A detailed appraisal of alternatives to the each of the alternatives that have been proposed by each federated governing boards is provided within this report above
- 13.2 Having undertaken the detailed option appraisal outlined in Section 4 above, the Governing Boards informed parents and the local community about their proposals for the future organisational arrangements of each school.

14.0 FINANCIAL IMPLICATIONS

14.1 Capital Position

Capital investment is not included within the proposal.

14.2 Revenue Position

School budgets are funded largely by pupil numbers so the proposal would not lead to an increase in revenue funding. The school organisation proposal of infant and junior schools provides the same level of funding across the federation as that currently received by the separate schools with the lump sum funding retained for each school. In an amalgamation of two schools (Option 3 above), one school's lump sum would cease and whilst an amalgamated school across two sites may receive split site funding, this would be a reduced funding amount compared to the lump sum funding for the two schools. Under the BAWB proposal all funding for West Burton CE VC Primary School would cease.

- 14.3 Federated governing boards can request to amalgamate their individual school budgets; these arrangements could continue under the infant and junior school proposals.

- 14.4 Based on the proposal taking effect during the start of 2026/27 financial year, and other things being equal, the governing boards have determined the optimum funding position, based on best estimates of revenue funding for each financial year for the individual schools within the federations. Irrespective of this school organisation proposal, the federation governing boards are continuously required to oversee financial management, and this includes considering efficiency actions where improvements are identified as being necessary in the school financial forecast.

15.0 LEGAL IMPLICATIONS

- 15.1 Legal advice has been provided to the federations by North Yorkshire Council that explains that the school that the child is admitted to, and is registered at, on their admission register, is required to educate the child, at that physical school. Whilst there are provisions that allow schools to educate a pupil offsite, the formal arrangements that the federations have been using go beyond the parliamentary intent. Furthermore, whilst the federation arrangements are in place for the governing board, the schools remain individual legal entities. Therefore, legally, statutory proposals would need to be agreed by the following bodies:

BAWB (Bainbridge, Askrigg and West Burton) Federation

- i) North Yorkshire Council would publish proposals to close West Burton Church of England (Voluntary Controlled) Primary School.
- ii) The federated governing board would publish proposals for of Bainbridge Church of England (Voluntary Controlled) Primary and Nursery School to change the age range of the school to 3 to 7 years.
- iii) The federated governing board would publish proposals for Askrigg Voluntary Controlled Primary School to change the age range of the school to 7 to 11 years.

Reeth and Gunnerside Schools Federation

- i) North Yorkshire Council would publish proposals for Reeth Community Primary School to change the age range of the school to 4 to 7 years.
- ii) The federated governing board would publish proposals for Gunnerside Methodist (Voluntary Controlled) Primary School to change the age range of the school to 7 to 11 years.

The Federation of Middleham (VA) & Spennithorne (VC) CE Primary Schools

- i) The federated governing board would publish proposals for Spennithorne Church of England (Voluntary Controlled) Primary School to change the age range of the school to 4 to 7 years.
- ii) The federated governing board would publish proposals for Middleham Church of England (Voluntary Aided) Primary School to change the age range of the school to 7 to 11 years.
- iii) The federated governing board would publish their proposal to change the status of Spennithorne from a Voluntary Controlled to a Voluntary Aided school

- 15.2 In order that the proposal by the Synergy Federation can be progressed the following statutory proposal would need to be agreed:
- (i) North Yorkshire Council would publish proposals to amalgamate Aiskew Leeming Bar Church of England (Voluntary Controlled) Primary School and Leeming and Londonderry Community Primary School through the technical closure of Leeming and Londonderry Community Primary School and the expansion of Aiskew Leeming Bar Church of England (Voluntary Controlled) Primary School onto an additional site (the Leeming and Londonderry school site).

- 15.3 These proposals will follow the DfE’s statutory guidance for proposers and decision makers. (DfE, ‘Opening and closing maintained schools. Statutory guidance for proposers and decision-makers’ and ‘Making significant changes (‘prescribed alterations’) to maintained schools. Statutory guidance for proposers and decision-makers’

16.0 EQUALITIES IMPLICATIONS

- 16.1 An Equality Impact Assessment has been undertaken and is attached (Appendix 4).

17.0 CLIMATE CHANGE IMPLICATIONS

- 17.1 A Climate Change Impact Assessment has been undertaken and is attached (Appendix 5)

18.0 CONSULTATION PROCESS AND TIMESCALES

- 18.1 A period of six weeks of consultation is proposed. An indicative timetable is set out below.
- 18.2 The final decision on the linked proposals would be taken by the Executive (or by the Executive Member if there are no objections) and, if agreed, the proposals would be implemented from 1 September 2026

Anticipated Key Dates

All dates are subject to approvals at each stage.

Consultation opens	22 Sept 2025
Public meetings	During Sept and Oct 2025
Consultation closes	7 Nov 2025
North Yorkshire Council’s Executive considers consultation responses	16 Dec 2025
Statutory Notices published (4 weeks for representations to be made)	12 January – 6 February 2026
Final decision by North Yorkshire Council’s Executive	17 March 2026
Implementation	1 September 2026

19.0 HUMAN RESOURCES IMPLICATIONS

- 19.1 Separate staff consultation processes, including meetings for staff and their professional associations and unions, would run in parallel with these consultations.

20.0 CONCLUSIONS

- 20.1 The current school organisation arrangements that are being operated by five federated governing boards are not compliant with the provisions of the Education Act 1996 and the School Attendance (Pupil Registration) (England) Regulations 2024 which govern the

arrangements for school admissions and registration, and action is required to be taken to implement compliant arrangements.

20.2 The federated governing boards, including Synergy Federation's governing board, have undertaken a thorough assessment of the different school organisation options available to them and have made proposals that will achieve or maintain compliance and provide a sustainable basis for the future provision of education within each locality.

20.3 Where the proposals made require that statutory processes are undertaken, each federated governing boards and council officers agree that it is desirable that the views of the school community and key stakeholders should be sought on the school organisation proposals.

21.0 REASONS FOR RECOMMENDATIONS

21.1 To ensure that the school organisation arrangements operated by the above federated governing boards are compliant with the legislation and guidance that govern the arrangements for school admissions and registration.

22.0 RECOMMENDATIONS

22.1 The Executive Member for Education, Learning and Skills is recommended to: -

1. Note the action that is proposed by the Federated Governing Board of The Federation of Follifoot and Spofforth CE Primary Schools to achieve compliance with the regulations; and
2. Give approval to consult on the following proposals:

BAWB (Bainbridge, Askrigg and West Burton) Federation

- That the age range of Bainbridge Church of England Primary should be changed from 3-11 to 3-7 such that it should become Bainbridge Church of England Infant and Nursery School
- That the age range of Askrigg Voluntary Controlled Primary School should be changed from 4-11 to 7-11, such that it should become Askrigg Voluntary Controlled Junior School
- That West Burton Church of England (Voluntary Controlled) Primary School should be closed; and
- That the two remaining schools should have a shared catchment area that comprises an amalgamation of the current catchment areas of the three schools.
- The PAN will be 15 at each school, to reflect the pupil forecast.

Reeth and Gunnerside Schools Federation:

- That the age range of Reeth Community Primary School is changed from 4-11 to 4-7, such that the school becomes Reeth Community Infant School
- That the age range Gunnerside Methodist (Voluntary Controlled) Primary School is changed from 4-11 to 7-11, such that the school becomes Gunnerside Methodist (Voluntary Controlled) Junior School
- That the schools would have a shared catchment area, comprising an amalgamation of the existing schools' current catchment areas
- The Local Authority approves through its discretion a 'nearest gate in the federation' policy for home school transport, which would be conditional upon the federation continuing to provide support with inter-school transport where that is required.
- The PAN will be 15 at each school, to reflect the combined pupil forecast

The Federation of Middleham (VA) & Spennithorne (VC) CE Primary Schools:

- That the age range of Spennithorne Church of England (Voluntary Controlled) Primary School be changed from 4-11 to 4-7 such that the school becomes Spennithorne Church of England Infant School
- That the age range of Middleham Church of England (Voluntary Aided) Primary School be changed from 4-11 to 7-11 such that the school becomes Middleham Church of England (Voluntary Aided) Junior School
- That the schools would have a shared catchment area, comprising an amalgamation of the existing schools' current catchment areas
- The PAN will be increased to 20 places at each school
- That the status of Spennithorne Church of England School is changed from Voluntary Controlled to Voluntary Aided

The Synergy Federation:

- That Aiskew Leeming Bar Church of England (Voluntary Controlled) Primary School and Leeming and Londonderry Community Primary School amalgamate with effect from 13 April 2026
- That this would be achieved through the technical closure of Leeming and Londonderry Community Primary School and the expansion of Aiskew Leeming Bar Church of England (Voluntary Controlled) Primary School onto an additional site (the Leeming and Londonderry school site)
- That the schools would have a shared catchment area, comprising an amalgamation of the existing schools' current catchment areas
- The PAN for the school will be 15

Home to school travel discretionary arrangements

- That the Council provides discretionary travel for children, already assessed as eligible for travel *and* on roll at schools on 1 September 2026, within the BAWB (Bainbridge, Askrigg and West Burton) Federation, Reeth and Gunnerside Schools Federation and The Federation of Middleham (VA) & Spennithorne (VC) CE schools for the duration of their education at the schools within the federation, subject to there being no change in their circumstances.

Stuart Carlton
CORPORATE DIRECTOR – CHILDREN AND YOUNG PEOPLE’S SERVICE.

Report prepared by: Mark Ashton, Strategic Planning

Action AgreedExecutive Member
Date:

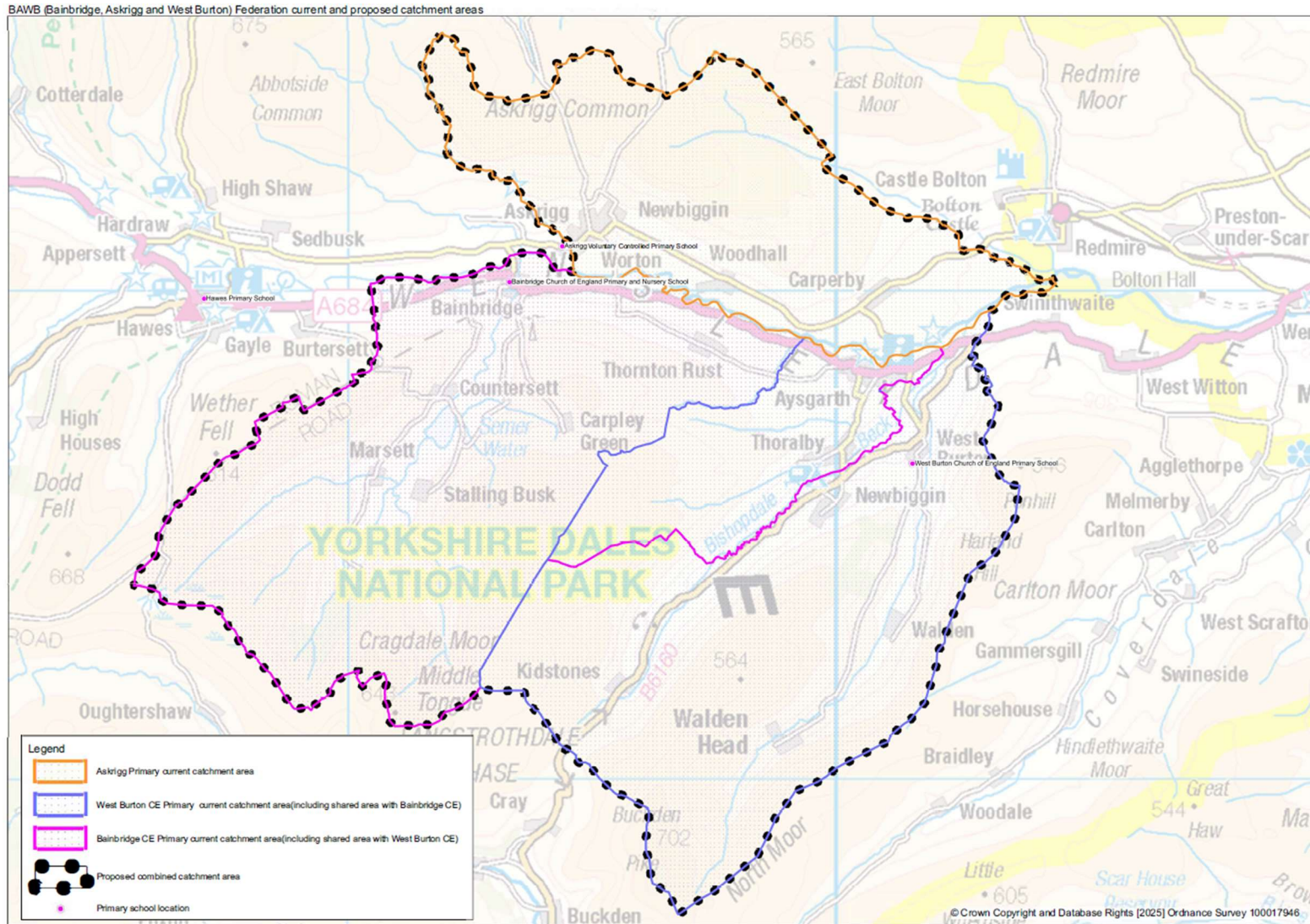
Action RequestedCorporate Director
Date:

List of Appendices:

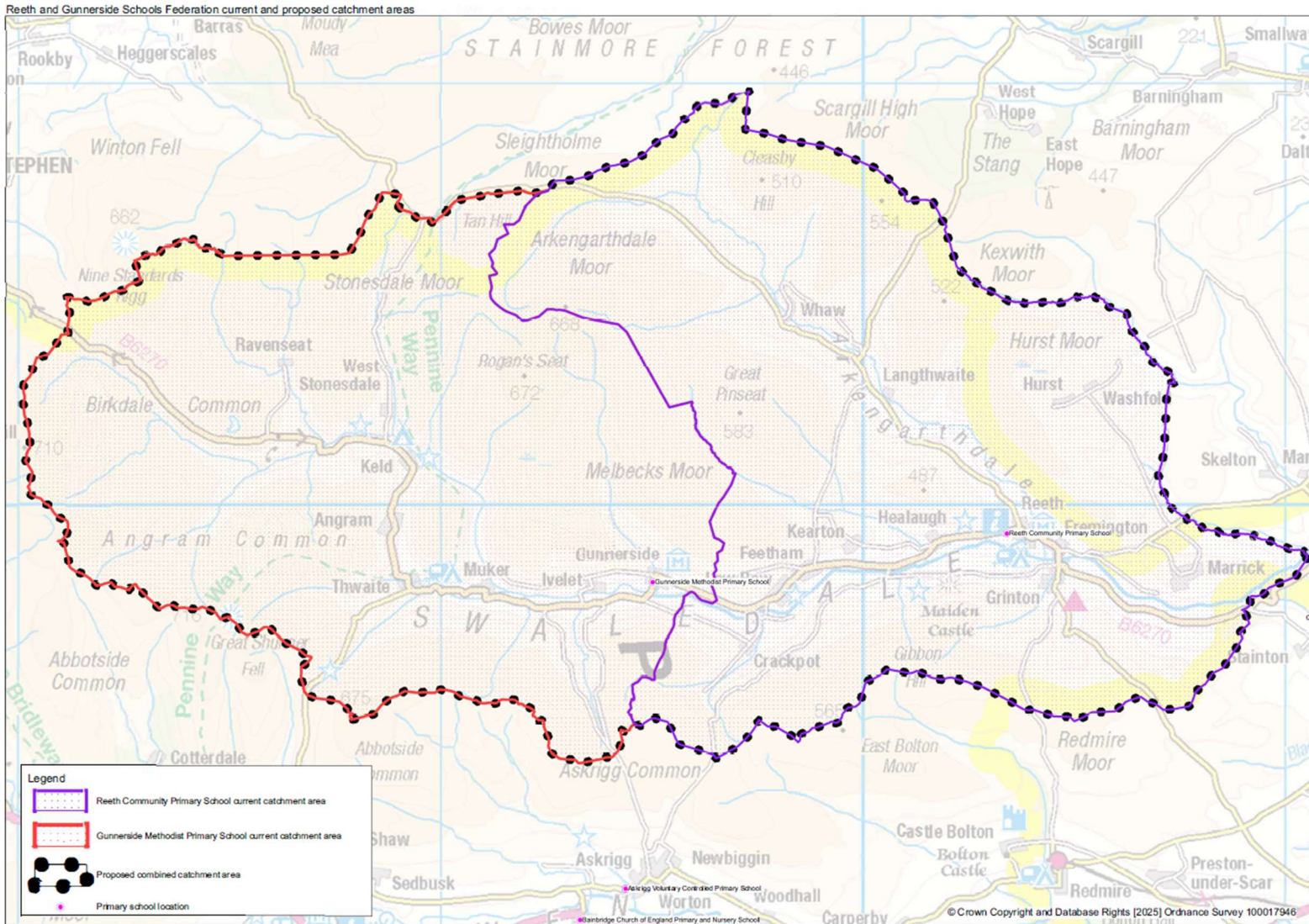
- Appendix 1 – Example Consultation Papers
- Appendix 2 – Maps showing future catchment area proposals
- Appendix 3 – Indicative Pupil Forecasts under proposals
- Appendix 4 – Equality Impact Assessment
- Appendix 5 – Climate Change Impact Assessment

Maps showing future catchment area proposals

Annex 1 – BAWB (Bainbridge, Askrigg and West Burton) Federation

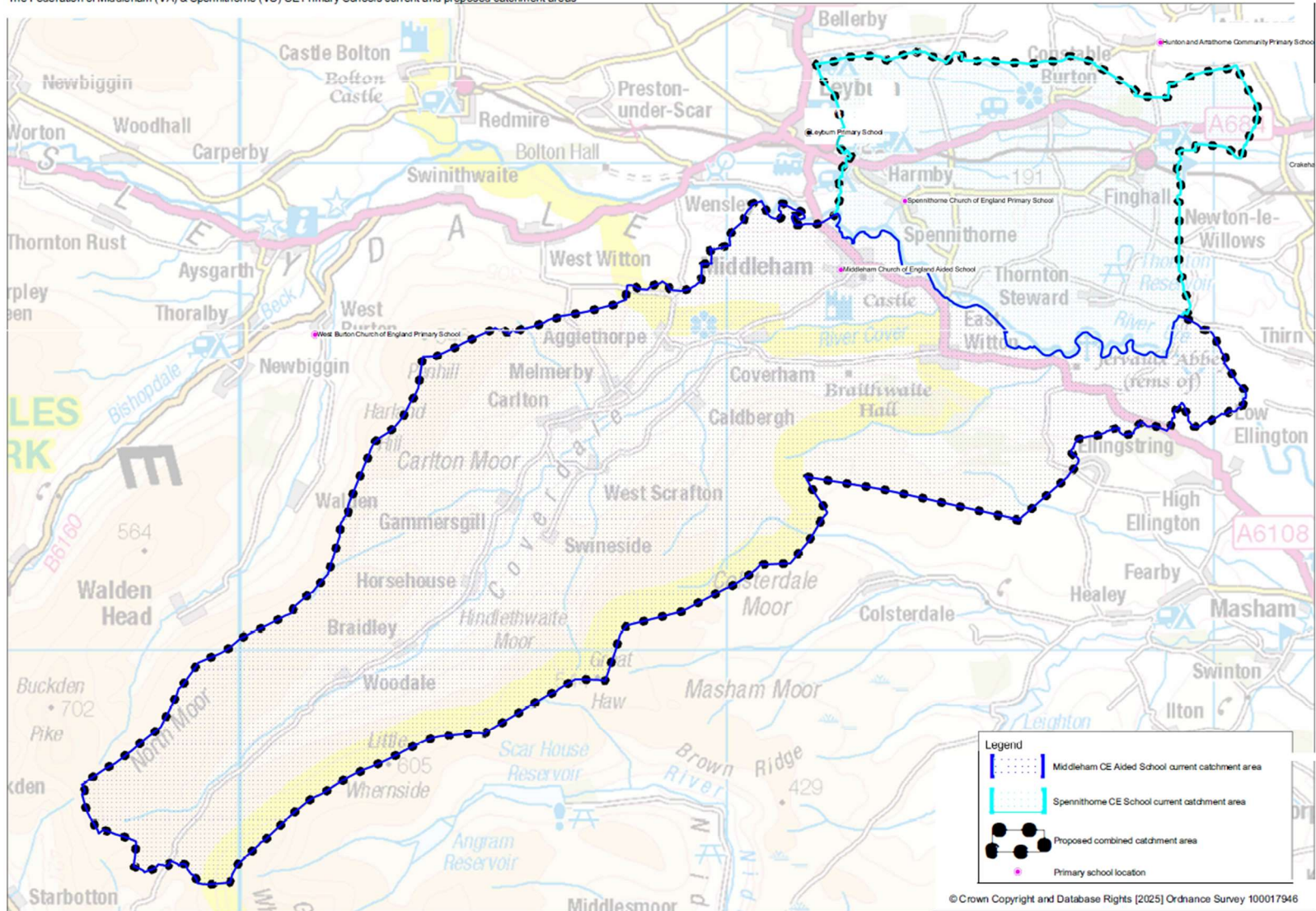


Annex 2 – Reeth and Gunnerside Schools Federation

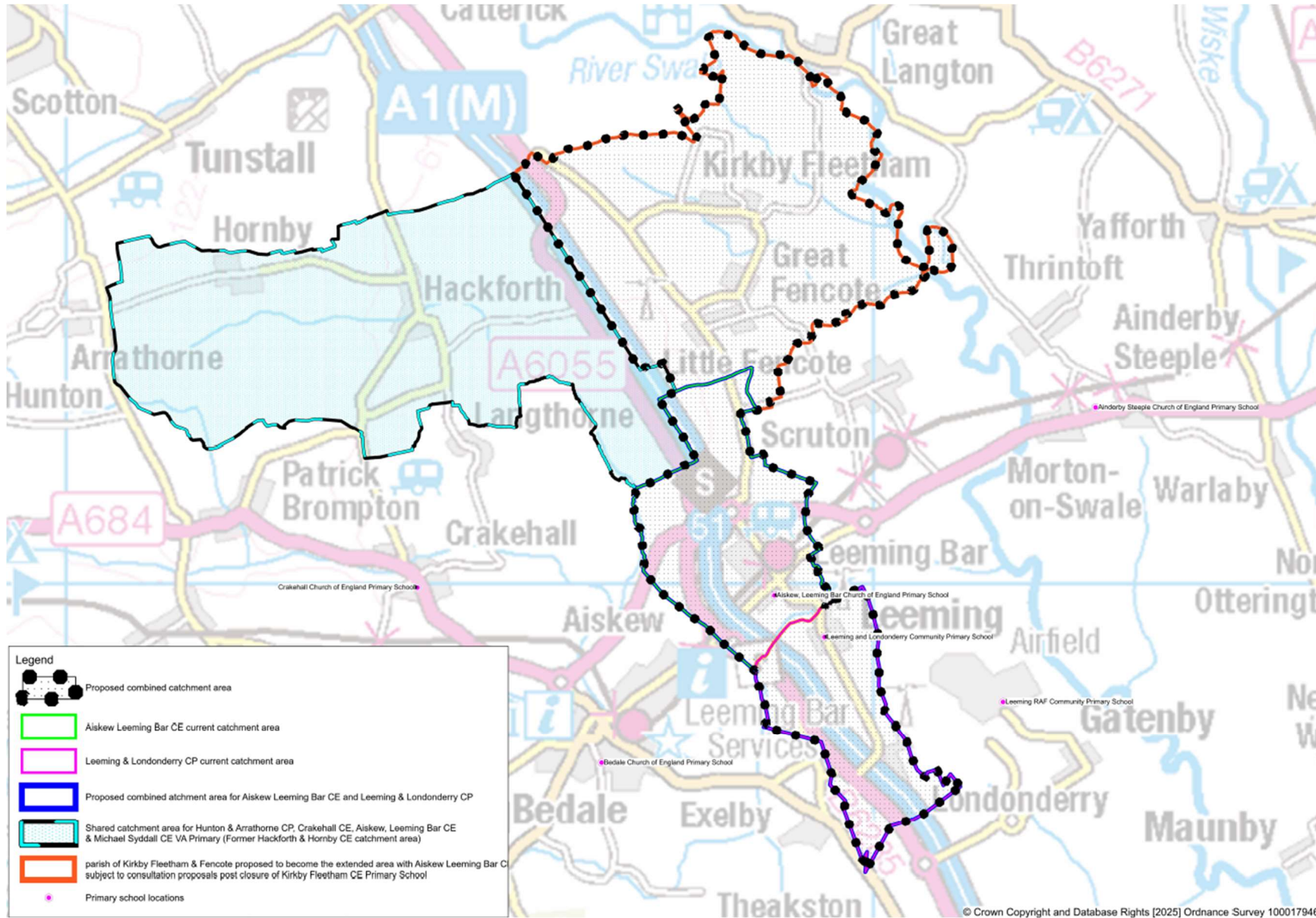


Annex 3 – The Federation of Middleham (VA) and Spennithorne (VC) Primary Schools

The Federation of Middleham (VA) & Spennithorne (VC) CE Primary Schools current and proposed catchment areas



Annex 4 - Aiskew, Leeming Bar CE & Leeming and Londonderry CP



Appendix 3: Climate change impact assessment

The purpose of this assessment is to help us understand the likely impacts of our decisions on the environment of North Yorkshire and on our aspiration to achieve net carbon neutrality by 2030, or as close to that date as possible. The intention is to mitigate negative effects and identify projects which will have positive effects.

This document should be completed in consultation with the supporting guidance. The final document will be published as part of the decision making process and should be written in Plain English.

If you have any additional queries which are not covered by the guidance please email climatechange@northyorks.gov.uk

Version 2: amended 11 August 2021

Please note: You may not need to undertake this assessment if your proposal will be subject to any of the following:

Planning Permission
Environmental Impact Assessment
Strategic Environmental Assessment

However, you will still need to summarise your findings in the summary section of the form below.

Please contact climatechange@northyorks.gov.uk for advice.

Title of proposal	School Organisation
Brief description of proposal	Proposals for revised school organisation arrangements requested by federated governing boards of primary schools in North Yorkshire
Directorate	Children and Young Peoples' Service
Service area	Strategic Planning
Lead officer	Jon Holden, Strategic Planning Manager
Names and roles of other people involved in carrying out the impact assessment	Mark Ashton, Strategic Planning Officer
Date impact assessment started	20/8/2025

Options appraisal Were any other options considered in trying to achieve the aim of this project? If so, please give brief details and explain why alternative options were not progressed.

A number of small schools and federations have secured their financial viability through the establishment of class and key stage structures such that children in year group or key stages from across their federations were educated at single sites irrespective of the schools at which individual pupils were registered. In some instances, has required that schools transport some pupils between sites within the school day and has thus had an impact upon curriculum delivery time. A number of federated schools have maintained these bespoke teaching arrangements over several years and they have locally arranged transport to 'move' children from school to school each day.

However, conversations have commenced with some schools undertaking this way of working about the temporary nature of the school organisation element of their arrangements and the requirement for formal longer-term solutions. Officers have supported the federated governing boards through the identification of a number of organisational models, each with different financial implications and which require to be considered in detail by the governing boards prior to the formal development of proposals that are compliant with legislation on the registration of pupils. These options include, but are not limited to, reverting to the provision of teaching at all school sites, to amalgamating as a single school and to utilising a single site.

A variety of alternative options to the proposals have been considered. The table in Section 4 of the Executive report to which this document is appended, sets out what these options were. The table in the report gives reasons why certain options would not both address the issue and at the same time be sustainable financially viable or because of its negative impact on performance which, under the current Ofsted framework, is a critical factor.

What impact will this proposal have on council budgets? Will it be cost neutral, have increased cost or reduce costs?

The implications for capital and revenue are set out in the report to Executive Members.

Capital Position

No capital works are needed for this proposal.

Revenue Position

School budgets are funded largely by pupil numbers so the proposals would not lead to an increase in revenue funding.

If an amalgamation is proposed, one school's lump sum would cease. If re-organising into infant and junior schools is proposed by a Federated Governing Board, both lump sums are retained. If a school closure forms part of a proposal, any savings to the Dedicated Schools Grant arising from the closure would remain within the ring-fenced Dedicated Schools Grant as part of the funding for all schools.

Federated Governing Boards can combine their school funds. Since the Federations would continue, combined revenue funding would continue to be an option under the proposals.

Based on the proposal taking effect on after the next financial year, and other things being equal, the Governing Boards of the Federations have established the most secure position, based on best estimates of revenue for each financial year beyond 2026/27.

Page 31

<p>How will this proposal impact on the environment?</p> <p>N.B. There may be short term negative impact and longer term positive impact. Please include all potential impacts over the lifetime of a project and provide an explanation.</p>	<p>Positive impact (Place a X in the box below where relevant)</p>	<p>No impact (Place a X in the box below where relevant)</p>	<p>Negative impact (Place a X in the box below where relevant)</p>	<p>Explain why will it have this effect and over what timescale?</p> <p>Where possible/relevant please include:</p> <ul style="list-style-type: none"> • Changes over and above business as usual • Evidence or measurement of effect • Figures for CO₂e • Links to relevant documents 	<p>Explain how you plan to mitigate any negative impacts.</p>	<p>Explain how you plan to improve any positive outcomes as far as possible.</p>
<p>Minimise greenhouse gas emissions e.g. reducing emissions from travel, increasing energy efficiencies etc.</p>	<p>Emissions from travel</p>		<p>X</p>	<p>The proposals will take place across the existing school buildings. However, travel for pupils will not in all instances follow similar/ same patterns to the existing pattern. Some pupils will no longer be transported between schools, which will reduce travel distances and increase time in school. However, some pupils may be transported to different schools than currently.</p> <p>There has been a reduction in pupils in recent years and there is forecast to be a further reduction in pupils, so this might effect minor savings on greenhouse gas emissions from travel since there will be slightly less pupils travelling to schools in the proposal.</p> <p>The issue of school transport is difficult to analyse as parental preference, and parental behaviour plays a large role in the level of</p>	<p>Where possible Integrated Passenger transport will choose vehicles and routes to minimise traffic. The amalgamated school will be encouraged and supported to develop a sustainable travel plan.</p>	<p>Schools will continue to encourage sustainable methods of transport where they are safe and possible. For example, by encouraging lift sharing, walking to school as part of developing their travel plans.</p>

<p>How will this proposal impact on the environment?</p> <p>N.B. There may be short term negative impact and longer term positive impact. Please include all potential impacts over the lifetime of a project and provide an explanation.</p>	<p>Positive impact (Place a X in the box below where relevant)</p>	<p>No impact (Place a X in the box below where relevant)</p>	<p>Negative impact (Place a X in the box below where relevant)</p>	<p>Explain why will it have this effect and over what timescale?</p> <p>Where possible/relevant please include:</p> <ul style="list-style-type: none"> • Changes over and above business as usual • Evidence or measurement of effect • Figures for CO₂e • Links to relevant documents 	<p>Explain how you plan to mitigate any negative impacts.</p>	<p>Explain how you plan to improve any positive outcomes as far as possible.</p>
<p>Page 33</p>				<p>emissions from travel. For example, even schools with a very small catchment area would have a high carbon footprint if the majority of parents chose to drive their children to school either at their catchment school or by preference to another school further afield. Many schools operate travel plans which encourage low carbon transport options such as walking and cycling.</p> <p>Under the proposals catchment areas would be combined. Pupils living within the combined catchment may be living in houses within the statutory 2 mile walking distance for children under 8 years of age or the statutory 3 miles walking distance for children aged 8 years and over. This may not be the same as the status quo where some pupils living within the combined catchment would be within the</p>		

	<p>How will this proposal impact on the environment?</p> <p>N.B. There may be short term negative impact and longer term positive impact. Please include all potential impacts over the lifetime of a project and provide an explanation.</p>	<p>Positive impact (Place a X in the box below where relevant)</p>	<p>No impact (Place a X in the box below where relevant)</p>	<p>Negative impact (Place a X in the box below where relevant)</p>	<p>Explain why will it have this effect and over what timescale?</p> <p>Where possible/relevant please include:</p> <ul style="list-style-type: none"> • Changes over and above business as usual • Evidence or measurement of effect • Figures for CO₂e • Links to relevant documents 	<p>Explain how you plan to mitigate any negative impacts.</p>	<p>Explain how you plan to improve any positive outcomes as far as possible.</p>
<p>Page 34</p>					<p>statutory walking distance for the nearest appropriate school.</p> <p>For pupils living beyond 3 miles home to school transport would be provided where appropriate in line with legislation.</p> <p>In the particular case of the proposed closure of West Burton CE VC School there will be a small number of pupils living in the West Burton area who are currently within a walking distance of the current school who will be eligible for transport to the next nearest school. Others who have previously walked may choose to drive to schools further afield. This would lead to an increase in vehicular travel.</p>		
	Emissions from construction		X		<p>N/A</p> <p>No capital works are needed for proposals. The existing school buildings are being used.</p>	N/A	N/A

<p>How will this proposal impact on the environment?</p> <p>N.B. There may be short term negative impact and longer term positive impact. Please include all potential impacts over the lifetime of a project and provide an explanation.</p>	<p>Positive impact (Place a X in the box below where relevant)</p>	<p>No impact (Place a X in the box below where relevant)</p>	<p>Negative impact (Place a X in the box below where relevant)</p>	<p>Explain why will it have this effect and over what timescale?</p> <p>Where possible/relevant please include:</p> <ul style="list-style-type: none"> • Changes over and above business as usual • Evidence or measurement of effect • Figures for CO₂e • Links to relevant documents 	<p>Explain how you plan to mitigate any negative impacts.</p>	<p>Explain how you plan to improve any positive outcomes as far as possible.</p>	
<p>Page 35</p>							
	<p>Emissions from running of buildings</p>		<p>X</p>		<p>The proposals will take place across the existing school buildings. Even though there has been a reduction in pupils in recent years and there is forecast to be a further reduction in pupils, this will not effect savings on greenhouse gas emissions savings on the school buildings, since they will operate in a similar/ same way. The Council would cease to operate the West Burton CE VC School Premises, and the pupils would be accommodated at existing local establishments with no additional running costs.</p>		
	<p>Emissions from data storage</p>		<p>X</p>		<p>The proposals will take place across existing federated schools, which already share data storage across the federations in most cases. The data storage for these federated schools will be similar under the proposals going forward.</p>		

<p>How will this proposal impact on the environment?</p> <p>N.B. There may be short term negative impact and longer term positive impact. Please include all potential impacts over the lifetime of a project and provide an explanation.</p>	<p>Positive impact (Place a X in the box below where relevant)</p>	<p>No impact (Place a X in the box below where relevant)</p>	<p>Negative impact (Place a X in the box below where relevant)</p>	<p>Explain why will it have this effect and over what timescale?</p> <p>Where possible/relevant please include:</p> <ul style="list-style-type: none"> • Changes over and above business as usual • Evidence or measurement of effect • Figures for CO₂e • Links to relevant documents 	<p>Explain how you plan to mitigate any negative impacts.</p>	<p>Explain how you plan to improve any positive outcomes as far as possible.</p>
Other						
<p>Minimise waste: Reduce, reuse, recycle and compost e.g. reducing use of single use plastic</p>		X		<p>While recycling is already encouraged within schools and the reduction of waste is promoted and taught to pupils, the schools' consumption of resources will not cease. There will not be a general reduction in the use of resources in schools under the proposals.</p>		
Reduce water consumption		X		<p>The water consumption required to operate most schools would be similar and therefore would not be removed from the NYC carbon footprint. The water consumption required to operate West Burton CE VC Primary School as an establishment would no longer be required and is therefore removed from the NYC carbon footprint.</p>		
Minimise pollution (including air, land, water, light and noise)		X		N/A		

<p>How will this proposal impact on the environment?</p> <p>N.B. There may be short term negative impact and longer term positive impact. Please include all potential impacts over the lifetime of a project and provide an explanation.</p>	<p>Positive impact (Place a X in the box below where relevant)</p>	<p>No impact (Place a X in the box below where relevant)</p>	<p>Negative impact (Place a X in the box below where relevant)</p>	<p>Explain why will it have this effect and over what timescale?</p> <p>Where possible/relevant please include:</p> <ul style="list-style-type: none"> Changes over and above business as usual Evidence or measurement of effect Figures for CO₂e Links to relevant documents 	<p>Explain how you plan to mitigate any negative impacts.</p>	<p>Explain how you plan to improve any positive outcomes as far as possible.</p>
<p>Ensure resilience to the effects of climate change e.g. reducing flood risk, mitigating effects of drier, hotter summers</p>		X		N/A		
<p>Enhance conservation and wildlife</p>		X		N/A		
<p>Safeguard the distinctive characteristics, features and special qualities of North Yorkshire's landscape</p>		X		N/A		
<p>Other (please state below)</p>						

Are there any recognised good practice environmental standards in relation to this proposal? If so, please detail how this proposal meets those standards.

N/A

Summary Summarise the findings of your impact assessment, including impacts, the recommendation in relation to addressing impacts, including any legal advice, and next steps. This summary should be used as part of the report to the decision maker:

This proposal has neither positive nor negative environmental impacts. The proposals are a strategic change across existing school buildings which will be used in a similar way to the way they are operated currently. The impacts in energy usage associated with two school establishments ceasing to be used to teach children of similar ages together and to become two separate schools would be negligible. Because it is a strategic rather than a building change, the proposal would not achieve significant reductions in heating, lighting and water usage. Equally, there is likely to be a neutral impact associated with use of vehicles to transport the pupils to and from school. Ultimately there is an overriding consideration in this proposal to provide the best legally compliant outcome for the education of children in the local area and the other options identified are not both educationally sustainable and legally compliant.

Sign off section

This climate change impact assessment was completed by: Mark Ashton

Name	Mark Ashton
Job title	Strategic Planning Officer
Service area	Strategic Planning
Directorate	CYPS
Signature	Mark Ashton
Completion date	22/8/2025

Authorised by relevant Assistant Director: Amanda Fielding

Date: 23/08/2025

Equality impact assessment (EIA) form: evidencing paying due regard to protected characteristics

(Form updated October 2023)

Proposals for revised School Organisation Arrangements requested by three Federated Governing Boards of Primary Schools

If you would like this information in another language or format such as Braille, large print or audio, please contact the Communications Unit on 01609 53 2013 or email communications@northyorks.gov.uk.



যদি আপনি এই ডকুমেন্ট অন্য ভাষায় বা ফরমেটে চান, তাহলে দয়া করে আমাদেরকে বলুন।

如欲索取以另一語文印製或另一格式製作的資料，請與我們聯絡。

اگر آپ کو معلومات کسی دیگر زبان یا دیگر شکل میں درکار ہوں تو برائے مہربانی ہم سے پوچھئے۔

Equality Impact Assessments (EIAs) are public documents. EIAs accompanying reports going to County Councillors for decisions are published with the committee papers on our website and are available in hard copy at the relevant meeting. To help people to find completed EIAs we also publish them in the Equality and Diversity section of our website. This will help people to see for themselves how we have paid due regard in order to meet statutory requirements.

Name of Directorate and Service Area	CYPS, Strategic Planning
Lead Officer and contact details	Jon Holden, Strategic Planning Manager, Jon.Holden@northyorks.gov.uk
Names and roles of other people involved in carrying out the EIA	Mark Ashton, Strategic Planning Officer
How will you pay due regard? e.g. working group, individual officer	LA Officers and Federated Governing Boards
When did the due regard process start?	An initial <u>EIA Screening Form</u> was completed on 29th August 2024 - for a briefing paper to the CYPS Leadership Team on school organisation regulations

Section 1. Please describe briefly what this EIA is about. (e.g. are you starting a new service, changing how you do something, stopping doing something?)

The proposals are:

BAWB (Bainbridge, Askrigg and West Burton) Federation

- That the age range of Bainbridge Church of England Primary should be changed from 3-11 to 3-7 such that it should become Bainbridge Church of England Infant and Nursery School
- That the age range of Askrigg Voluntary Controlled Primary School should be changed from 4-11 to 7-11, such that it should become Askrigg Voluntary Controlled Junior School
- That West Burton Church of England (Voluntary Controlled) Primary School should be closed; and
- That the two remaining schools should have a shared catchment area that comprises an amalgamation of the current catchment areas of the three schools.
- The PAN will be 15 at each school, to reflect the pupil forecast.

Reeth and Gunnerside Schools Federation:

- That the age range of Reeth Community Primary School is changed from 4-11 to 4-7, such that the school becomes Reeth Community Infant School
- That the age range Gunnerside Methodist (Voluntary Controlled) Primary School is changed from 4-11 to 7-11, such that the school becomes Gunnerside Methodist (Voluntary Controlled) Junior School
- That the schools would have a shared catchment area, comprising an amalgamation of the existing schools' current catchment areas
- The Local Authority approves through its discretion a 'nearest gate in the federation' policy for home school transport, which would be conditional upon the federation continuing to provide support with inter-school transport where that is required.
- The PAN will be 15 at each school, to reflect the combined pupil forecast

The Federation of Middleham (VA) & Spennithorne (VC) CE Primary Schools:

- That the age range of Spennithorne Church of England (Voluntary Controlled) Primary School be changed from 4-11 to 4-7 such that the school becomes Spennithorne Church of England Infant School
- That the age range of Middleham Church of England (Voluntary Aided) Primary School be changed from 4-11 to 7-11 such that the school becomes Middleham Church of England (Voluntary Aided) Junior School
- That the schools would have a shared catchment area, comprising an amalgamation of the existing schools' current catchment areas
- The PAN will be increased to 20 places at each school
- That the status of Spennithorne Church of England School is changed from Voluntary Controlled to Voluntary Aided

The Synergy Federation:

- That Aiskew Leeming Bar Church of England (Voluntary Controlled) Primary School and Leeming and Londonderry Community Primary School amalgamate with effect from 13 April 2026
- That this would be achieved through the technical closure of Leeming and Londonderry Community Primary School and the expansion of Aiskew Leeming Bar Church of

England (Voluntary Controlled) Primary School onto an additional site (the Leeming and Londonderry school site)

- That the schools would have a shared catchment area, comprising an amalgamation of the existing schools' current catchment areas
- The PAN for the school will be 15

Home to school travel discretionary arrangements

- That the Council provides discretionary travel for children, already assessed as eligible for travel *and* on roll at schools on 1 September 2026, within the BAWB (Bainbridge, Askrigg and West Burton) Federation, Reeth and Gunnerside Schools Federation and The Federation of Middleham (VA) & Spennithorne (VC) CE schools for the duration of their education at the schools within the federation, subject to there being no change in their circumstances.

Section 2. Why is this being proposed? What are the aims? What does the authority hope to achieve by it? (e.g. to save money, meet increased demand, do things in a better way.)

Over the last few years, a number of small schools and federations have successfully secured their financial viability through the establishment of class and key stage structures and other local organisational arrangements such that children in year group or key stages from across their federations were educated at single sites irrespective of the schools at which individual pupils were registered. This has been beneficial to school leaders and governors as it has allowed their efficient use of teaching resources in curriculum delivery, but, in some instances, has required that schools transport some pupils between sites within the school day and has thus had an impact upon curriculum delivery time. A number of federated schools have maintained these bespoke teaching arrangements over several years and they have locally arranged transport to 'move' children from school to school each day.

However, conversations have commenced with some schools undertaking this way of working about the temporary nature of the school organisation element of their arrangements and the requirement for formal longer-term solutions. Officers have supported the federated governing boards through the identification of a number of organisational models, each with different financial implications and which require to be considered in detail by the governing boards prior to the formal development of proposals that are compliant with legislation on the registration of pupils. These options include, but are not limited to, reverting to the provision of teaching at all school sites, to amalgamating as a single school and to utilising a single site.

Section 3. What will change? What will be different for customers and/or staff?

It is proposed that pupils will be taught in the school at which they are registered. Federations between schools will continue but parents with children attending an infant school will have to apply for a place in the junior school; schools' separate catchment areas will be merged to create a single combined catchment area and PANs (Planned Admission Numbers) will increase. It is also proposed that West Burton CE Primary School will close.

Section 4. Involvement and consultation (What involvement and consultation has been done regarding the proposal and what are the results? What consultation will be needed and how will it be done?)

A six-week consultation period will run from September to November 2025. Consultation documents will be distributed to a wide range of stakeholders, and public meetings will be held. The consultation documents and responses to the consultation will be included in the subsequent report to the Council’s Executive Committee in December 2025 seeking permission to publish Statutory Notices in January 2026, for a further 4-week period of consultation.

Section 5. What impact will this proposal have on council budgets? Will it be cost neutral, have increased cost or reduce costs?

The implications for capital and revenue are set out in the report to Executive Members.

Capital Position

No capital works are needed for these proposals.

Revenue Position

School budgets are funded largely by pupil numbers so the proposals would not lead to an increase in revenue funding.

Federated Governing Boards can combine their school funds. Since the Federations would continue, combined revenue funding would continue under the proposals.

If an amalgamation is proposed, one school’s lump sum would cease. If re-organising into infant and junior schools is proposed by a Federated Governing Board, both lump sums are retained. With regard to the proposed closure of West Burton Primary School, any savings to the Dedicated Schools Grant arising from the closure would remain within the ring-fenced Dedicated Schools Grant as part of the funding for all schools.

Based on the proposal taking effect on the start of April 2026 and other things being equal, the Governing Boards of the Federations have established the most secure position, based on best estimates of revenue for each financial year beyond 2026/27.

Home to school travel assistance would be provided for entitled pupils in accordance with the Council’s home to school transport policy. Costs will depend on the individual choices of schools by parents and may also depend on the circumstances of individual pupils.

BAWB (Bainbridge, Askrigg and West Burton) Federation:

Section 6. How will this proposal affect people with	No impact	Make things better	Make things worse	Why will it have this effect? Provide evidence from engagement, consultation and/or service user data or demographic information etc.
--	-----------	--------------------	-------------------	---

protected characteristics?				
Age		X	X	<p>Current arrangements of combining pupils of similar age on one site, irrespective of the school in which they are registered, helps limit mixed year groups. The proposals will help minimize mixed year groups and in some cases will increase the pupils' access to children of the same age group.</p> <p>If the decision is taken to close West Burton School this adversely affects those seeking provision at the school; however, teaching at the school has been suspended since September 2024.</p>
Disability	X			<p>The schools are mainstream, offering universal provision and will offer appropriate educational provision for all learners for whom a mainstream placement is considered appropriate. They will promote inclusive opportunities and early intervention, as well as high quality teaching and learning.</p> <p>Expertise will be utilised from the Council to provide appropriate SEN support.</p> <p>NYC will continue to meet the requirements of the Equality Act 2010 which obligates us to make reasonable adjustments to accommodate disabled individuals. In accordance with equalities legislation, school buildings are generally accessible for pupils, and, in addition, the School Admissions Code makes it unlawful to discriminate against or disadvantage disabled children or those with special educational needs.</p>
Sex	x			No impact is anticipated.
Race	x			No impact is anticipated.
Gender reassignment	x			No impact is anticipated.
Sexual orientation	x			No impact is anticipated.
Religion or belief			x	If the decision is taken to close West Burton CE Primary School, this will adversely impact upon

				those pupils who wish to be educated in a Church of England School. Parents can apply to another CE school and the Council will do its best to comply with their preference through the co-ordinated preference exercise.
Pregnancy or maternity	x			No impact is anticipated.
Marriage or civil partnership	x			No impact is anticipated.

Reeth and Gunnerside Schools Federation:

Section 6. How will this proposal affect people with protected characteristics?	No impact	Make things better	Make things worse	Why will it have this effect? Provide evidence from engagement, consultation and/or service user data or demographic information etc.
Age	X			Current arrangements of combining pupils of similar age on one site, irrespective of the school in which they are registered, helps limit mixed year groups. The proposals will help minimise mixed year groups and in some cases will increase pupils' access to children of the same age group.
Disability	X			<p>The schools are mainstream, offering universal provision and will offer appropriate educational provision for all learners for whom a mainstream placement is considered appropriate. They will promote inclusive opportunities and early intervention, as well as high quality teaching and learning.</p> <p>Expertise will be utilised from the Council to provide appropriate SEN support.</p> <p>NYC will continue to meet the requirements of the Equality Act 2010 which obligates us to make reasonable adjustments to accommodate disabled individuals. In accordance with equalities legislation, school buildings are generally accessible for pupils, and, in addition, the School Admissions Code makes it unlawful to discriminate against or disadvantage disabled children or those with special educational needs.</p>
Sex	x			No impact is anticipated.

Race	x			No impact is anticipated.
Gender reassignment	x			No impact is anticipated.
Sexual orientation	x			No impact is anticipated.
Religion or belief	x			No impact is anticipated. Schools with a religious designation will retain their designation and continue to work with their relevant diocese.
Pregnancy or maternity	x			No impact is anticipated.
Marriage or civil partnership	x			No impact is anticipated.

The Federation of Middleham (VA) & Spennithorne (VC) CE Primary Schools

Section 6. How will this proposal affect people with protected characteristics?	No impact	Make things better	Make things worse	Why will it have this effect? Provide evidence from engagement, consultation and/or service user data or demographic information etc.
Age	X			Current arrangements of combining pupils of similar age on one site, irrespective of the school in which they are registered, helps limit mixed year groups. The proposals will help minimise mixed year groups and in some cases will increase pupils' access to children of the same age group.
Disability	X			The schools are mainstream, offering universal provision and will offer appropriate educational provision for all learners for whom a mainstream placement is considered appropriate. They will promote inclusive opportunities and early intervention, as well as high quality teaching and learning. Expertise will be utilised from the Council to provide appropriate SEN support.

				NYC will continue to meet the requirements of the Equality Act 2010 which obligates us to make reasonable adjustments to accommodate disabled individuals. In accordance with equalities legislation, school buildings are generally accessible for pupils, and, in addition, the School Admissions Code makes it unlawful to discriminate against or disadvantage disabled children or those with special educational needs.
Sex	x			No impact is anticipated.
Race	x			No impact is anticipated.
Gender reassignment	x			No impact is anticipated.
Sexual orientation	x			No impact is anticipated.
Religion or belief	x			No impact is anticipated. Schools with a religious designation will retain their designation and continue to work with their relevant diocese.
Pregnancy or maternity	x			No impact is anticipated.
Marriage or civil partnership	x			No impact is anticipated.

Section 7

BAWB (Bainbridge, Askrigg and West Burton) Federation:

Section 7. How will this proposal affect people who...	No impact	Make things better	Make things worse	Why will it have this effect? Provide evidence from engagement, consultation and/or service user data or demographic information etc.
..live in a rural area?			x	The schools within this proposal are classified by the DfE as serving rural villages in a sparse setting and rural hamlets and isolated dwellings in a sparse setting. This does not mean rural schools should not change. It means that the case should be strong, and the proposals must be clearly in the best interests of educational

				<p>provision in the area. Careful consideration has been had to alternatives, transport implications and the impact on local people and the wider community. It is concluded that the case for the proposals is strong, in making the provision legally compliant, and in the best interests of educational provision in the areas.</p> <p>The proposed closure of West Burton School would have an adverse impact for those living within its catchment that attend the school as they would have to travel to alternative schools. However, teaching at West Burton School has been temporarily suspended since September 2024. If the decision is made to proceed with the statutory notices and proposed closure, Council Officers will work with parents and families to identify places for their children at alternative schools.</p>
...have a low income?			x	There may be adverse impact on those families with low incomes if they have to travel to a different school. However, this would be mitigated by the Council for those children from low-income families who are eligible for transport assistance, in line with the Council's Home to School Transport Policy
...are carers (unpaid family or friend)?	x			No impact is anticipated.
..... are from the Armed Forces Community	x			No impact is anticipated.

Reeth and Gunnerside Schools Federation:

Section 7. How will this proposal affect people who...	No impact	Make things better	Make things worse	Why will it have this effect? Provide evidence from engagement, consultation and/or service user data or demographic information etc.
..live in a rural area?	x			The schools within this proposal are classified by the DfE as serving rural villages in a sparse setting and rural hamlets and isolated dwellings in a sparse setting. This does not mean rural schools should not change. It means that the case should be strong, and the proposals must

				be clearly in the best interests of educational provision in the area. Careful consideration has been had to alternatives, transport implications and the impact on local people and the wider community. It is concluded that the case for the proposals is strong, in making the provision legally compliant, and in the best interests of educational provision in the areas.
...have a low income?			x	There may be adverse impact on those families with low incomes if they have to travel to a different school. However, this would be mitigated by the Council for those children from low-income families who are eligible for transport assistance, in line with the Council's Home to School Transport Policy
...are carers (unpaid family or friend)?	x			No impact is anticipated.
..... are from the Armed Forces Community	x			No impact is anticipated.

The Federation of Middleham (VA) & Spennithorne (VC) CE Primary Schools

Section 7. How will this proposal affect people who...	No impact	Make things better	Make things worse	Why will it have this effect? Provide evidence from engagement, consultation and/or service user data or demographic information etc.
..live in a rural area?	x			The schools within this proposal are classified by the DfE as serving rural villages in a sparse setting and rural hamlets and isolated dwellings in a sparse setting. This does not mean rural schools should not change. It means that the case should be strong, and the proposals must be clearly in the best interests of educational provision in the area. Careful consideration has been had to alternatives, transport implications and the impact on local people and the wider community. It is concluded that the case for the proposals is strong, in making the provision legally compliant, and in the best interests of educational provision in the areas.
...have a low income?			x	There may be adverse impact on those families with low incomes if they must travel to a different school. However, this would be mitigated by the Council for those children from low-income families who are eligible for transport assistance,

				in line with the Council's Home to School Transport Policy
...are carers (unpaid family or friend)?	x			No impact is anticipated.
..... are from the Armed Forces Community	x			No impact is anticipated.

The Synergy Federation

Section 7. How will this proposal affect people who...	No impact	Make things better	Make things worse	Why will it have this effect? Provide evidence from engagement, consultation and/or service user data or demographic information etc.
..live in a rural area?	x			The schools within this proposal are classified by the DfE as serving a rural village. This does not mean rural schools should not change. It means that the case should be strong, and the proposals must be clearly in the best interests of educational provision in the area. Careful consideration has been had to alternatives, transport implications and the impact on local people and the wider community. It is concluded that the case for the proposals is strong, in making the provision legally compliant, and in the best interests of educational provision in the areas.
...have a low income?			x	There may be adverse impact on those families with low incomes if they must travel to a different school. However, this would be mitigated by the Council for those children from low-income families who are eligible for transport assistance, in line with the Council's Home to School Transport Policy
...are carers (unpaid family or friend)?	x			No impact is anticipated.
..... are from the Armed Forces Community	x			No impact is anticipated.

Section 8. Geographic impact – Please detail where the impact will be (please tick all that apply)

North Yorkshire wide	
Craven	
Hambleton	x
Harrogate	
Richmondshire	x
Ryedale	
Scarborough	
Selby	
If you have ticked one or more areas, will specific town(s)/village(s) be particularly impacted? If so, please specify below.	
BAWB (Bainbridge, Askrigg and West Burton) Federation: West Burton, Askrigg, Bainbridge	
Reeth and Gunnerside Schools Federation: Reeth, Gunnerside	
The Federation of Middleham (VA) & Spennithorne (VC) CE Primary Schools: Middleham and Spennithorne	
Synergy Federation: Aiskew, Leeming Bar and Londonderry	

Section 9. Will the proposal affect anyone more because of a combination of protected characteristics? (e.g. older women or young gay men) State what you think the effect may be and why, providing evidence from engagement, consultation and/or service user data or demographic information etc.

All pupils and staff at the schools would experience changes under these proposals that staff and governors would need to manage sensitively.

Section 10. Next steps to address the anticipated impact. Select one of the following options and explain why this has been chosen. (Remember: we have an anticipatory duty to make reasonable adjustments so that disabled people can access services and work for us)	Tick option chosen
1. No adverse impact - no major change needed to the proposal. There is no potential for discrimination or adverse impact identified.	
2. Adverse impact - adjust the proposal - The EIA identifies potential problems or missed opportunities. We will change our proposal to reduce or remove these adverse impacts, or we will achieve our aim in another way which will not make things worse for people.	
3. Adverse impact - continue the proposal - The EIA identifies potential problems or missed opportunities. We cannot change our proposal to reduce or remove these adverse impacts, nor can we achieve our aim in another way which will not make things worse for people. (There must be compelling reasons for continuing	x

with proposals which will have the most adverse impacts. Get advice from Legal Services)	
4. Actual or potential unlawful discrimination - stop and remove the proposal – The EIA identifies actual or potential unlawful discrimination. It must be stopped.	
Explanation of why option has been chosen. (Include any advice given by Legal Services.)	
<p>The Council's Officers, guided by legal opinion and DfE advice, feel that the proposals to establish school organisational structures which are legally compliant are necessary and in the best interests of children and families served by the proposals. On the basis of the proposals, pupils will be taught in the schools in which they are registered.</p> <p>The Local Authority's admission team will continue to work with families to try to meet their individual preferences for primary schools.</p> <p>Home to school transport will be assessed in line with the Council's policy.</p> <p>West Burton CE VC Primary and Leeming and Londonderry Community Primary School are designated as rural schools under the Designation of Rural Primary Schools (England) Order. The School Organisation regulations and guidance contain a presumption against closure of rural schools, and it is a requirement that proposers must consider the effect of the discontinuance of any rural primary school on the local community. The statutory guidance specifically states that 'This does not mean that a rural school will never close, but the case for closure should be strong and a proposal must be clearly in the best interests of educational provision in the area.' Careful consideration to alternatives to closure of the school, including transport implications and the impact on local people and the wider community will be considered in the Statutory Proposals (if published) and the accompanying report to the Executive.</p>	

Section 11. If the proposal is to be implemented, how will you find out how it is really affecting people? (How will you monitor and review the changes?)

Monitoring will be carried out through children and young people's services and through Ofsted inspections.

Section 12. Action plan. List any actions you need to take which have been identified in this EIA, including post implementation review to find out how the outcomes have been achieved in practice and what impacts there have actually been on people with protected characteristics.

Action	Lead	By when	Progress	Monitoring arrangements
Not Applicable				

Section 13. Summary Summarise the findings of your EIA, including impacts, recommendation in relation to addressing impacts, including any legal advice, and next steps. This summary should be used as part of the report to the decision maker.

The purpose of the consultation on these proposals and proposed decision is to ensure that children are educated in the school in which they are registered, that education is provided in the area in a sustainable manner and to establish school organisational structures which are legally compliant. Whilst it is recognised that there may be some adverse impact upon those with protected characteristics of age and religion/belief, there are more positive impacts that will result if these proposals are implemented. As these proposals develop any adverse impacts will be carefully monitored, and all reasonable mitigations will be taken.

Section 14. Sign off section

This full EIA was completed by:

Name: Mark Ashton

Job title: Strategic Planning Officer

Directorate: CYPS

Signature: Mark Ashton

Completion date: 21 August 2025

Authorised by relevant Assistant Director (signature): Amanda Fielding

Date: 23 August 2025